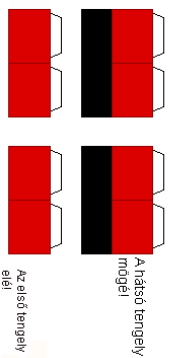
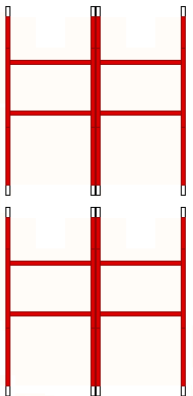
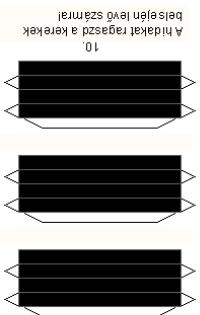


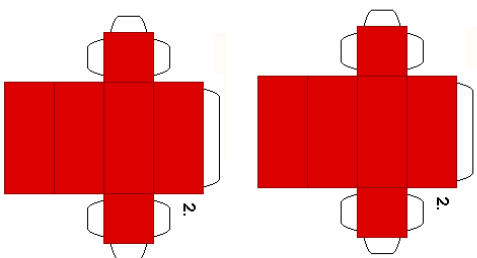
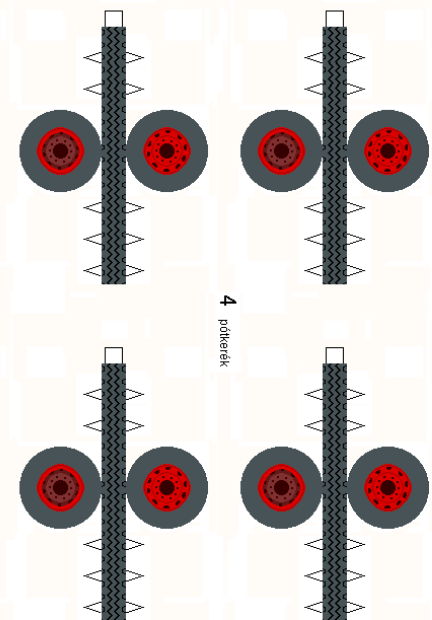
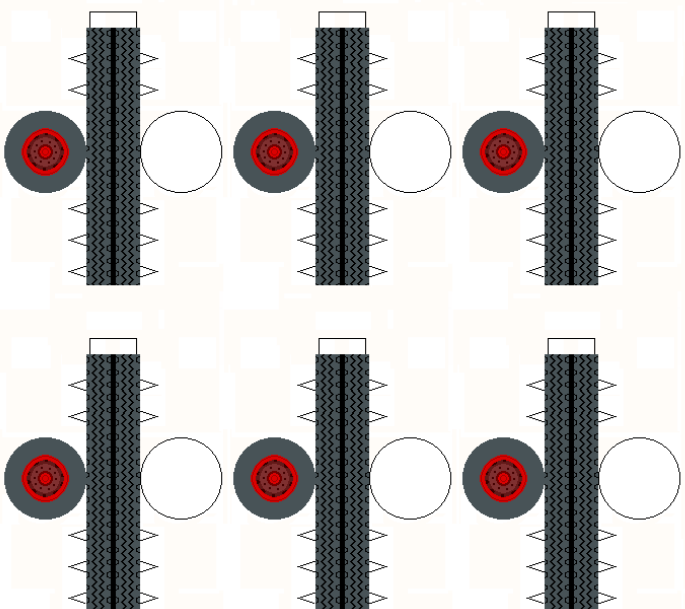
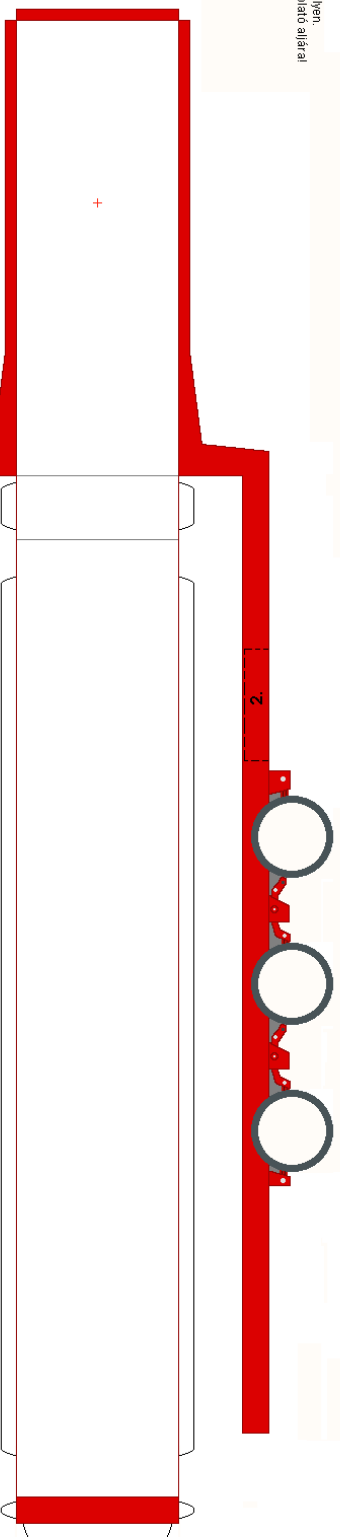
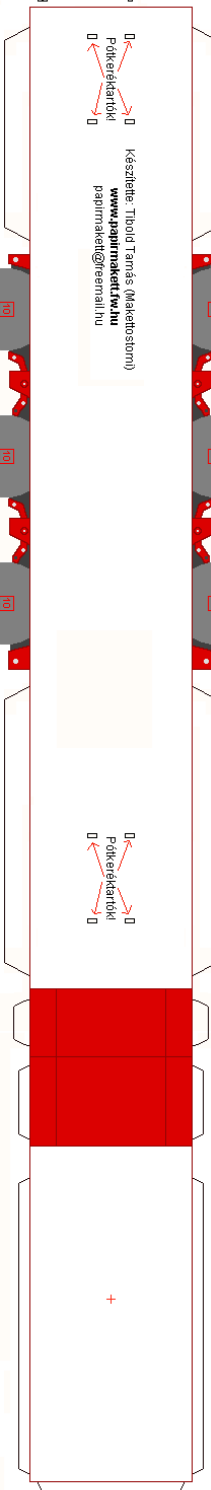
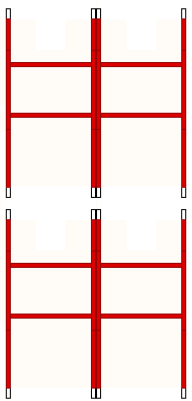
Sarvécók



Olvasd el a ragasztási tanácsokat is!



A pótkerekardék 2 oldalát ragaszd össze egymással, a piros vonallal jelzett helyen. Utána ragaszd őket a rövid oldalra az alváz alá, a hosszabbik oldalra pedig a plató alá!



A kitémasztólábakat ragaszd össze, ragaszd rájuk a talpakat, és ragaszd a helyükre!

Olvasd el a ragasztási tanácsokat is!

