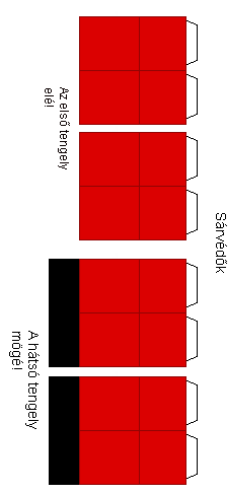
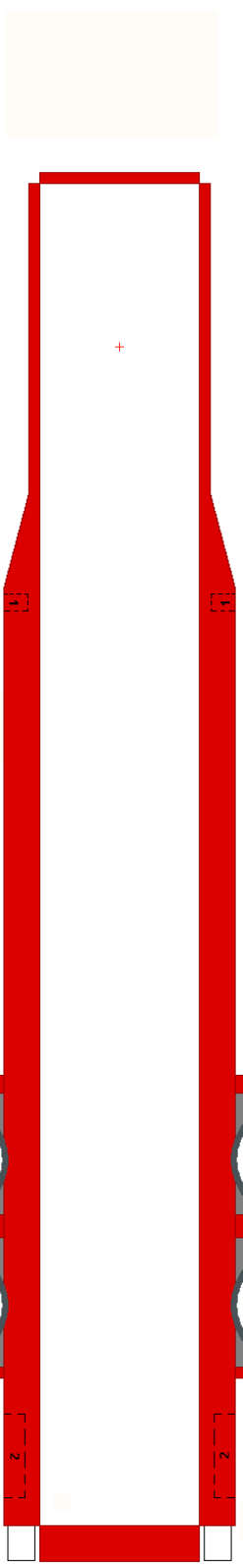
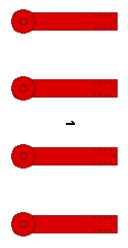
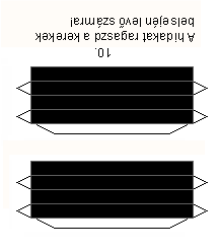
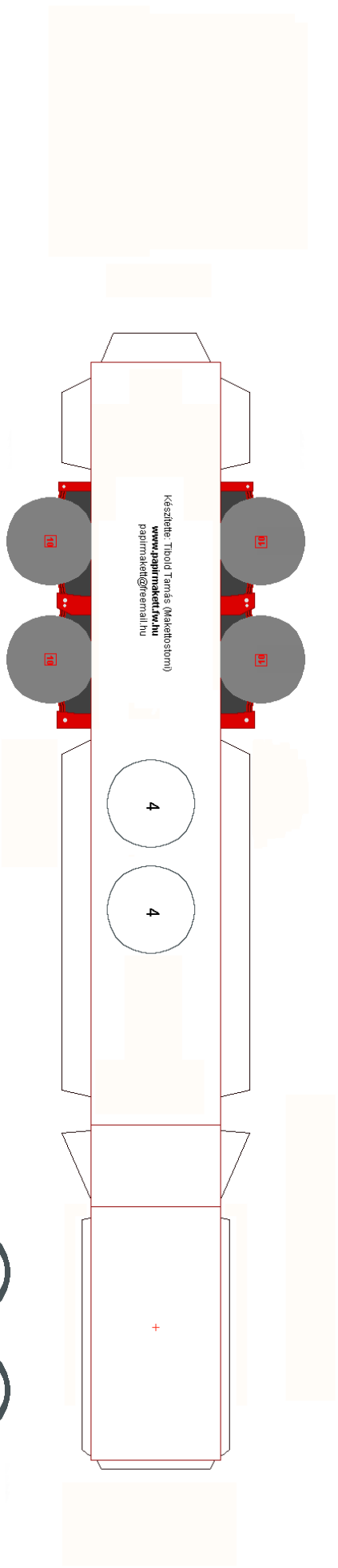
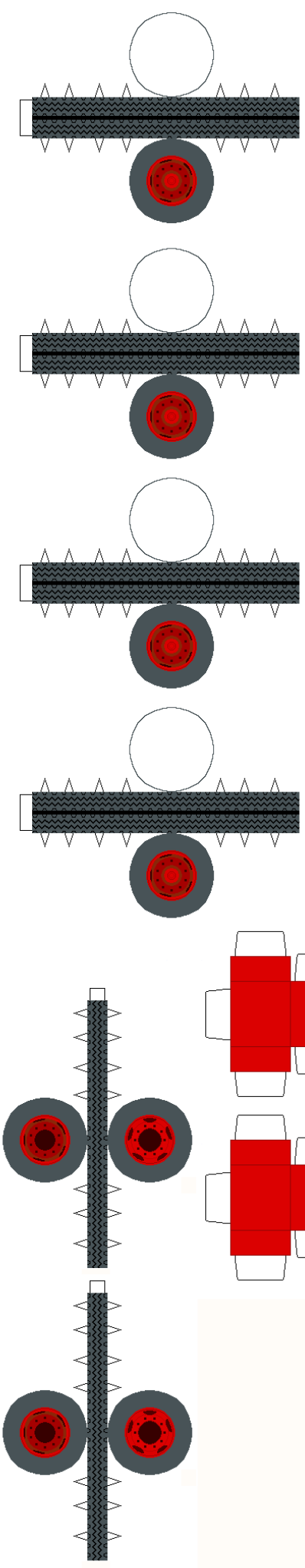
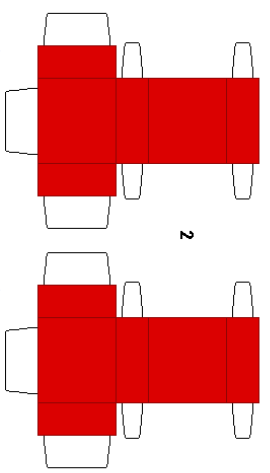


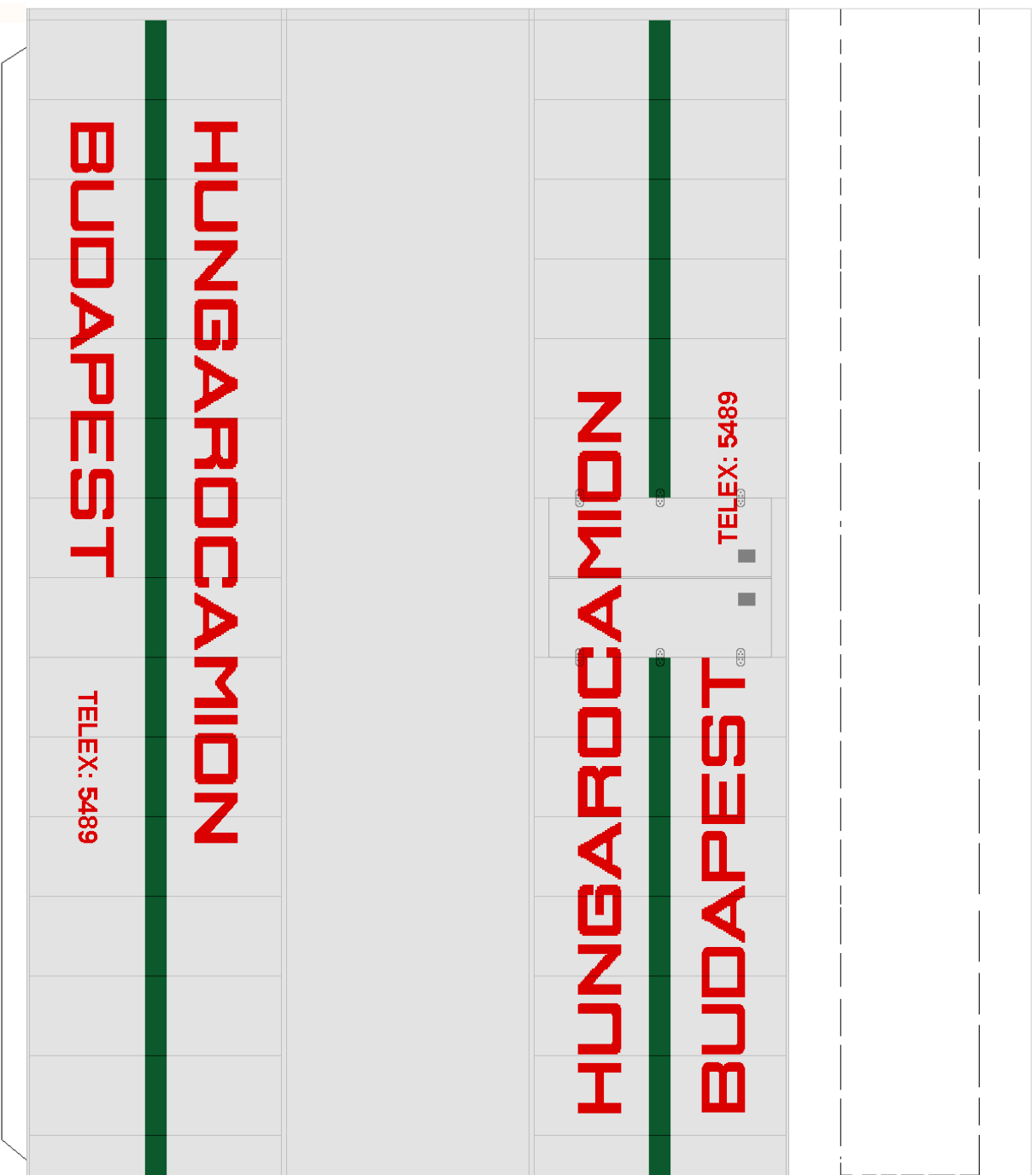
Olvasd el a ragasztási tanácsokat is!



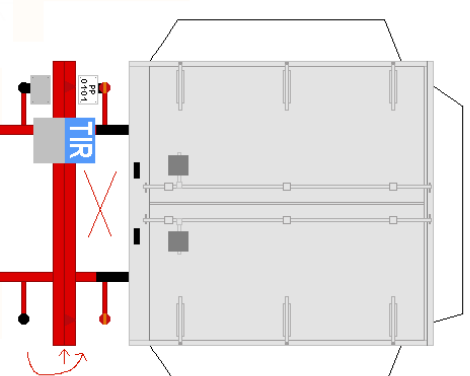
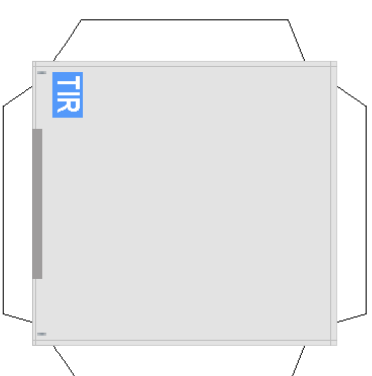
A sárvédőket ilyen alakúra hajtsd meg!

This text is accompanied by a red arrow pointing to the right, indicating the direction to fold the fenders.





Állítsd a nyílra jelölt vonal mentén
hajlít össze, és ragasd a jobb
oldali lamppa tartóoldalra, a telephívó
és a tolnáló közé!



A nyílra jelölt vonal mentén hajsd vissza
az alsó részhez X-el jelölt részt! Vágd ki!